

Switch administrable PoE 6
puertos Full Gigabit

Switch PoE(4*GE-PoE+2*GF-SFP)

Switch No PoE(4*GE + 2*GF-SFP)

Manual de usuario

1 Introducción de producto

1.1 Información general

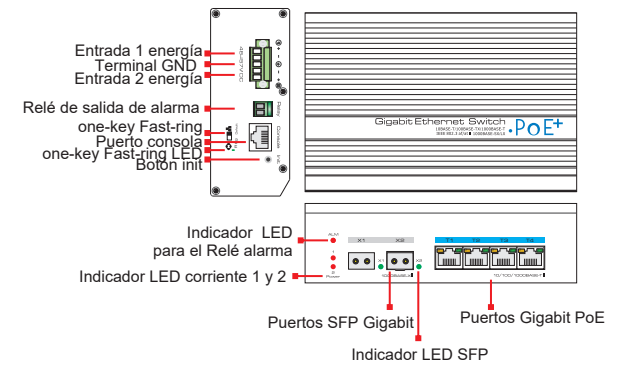
La serie de productos de switches industriales de 6 puertos full gigabit cuenta con equipos PoE (4 * GE-PoE + 2 * GF-SFP) y switches no PoE (4 * GE + 2 * GF-SFP). Proporciona, 4 puertos Gigabit PoE + y 2 puertos SFP ópticos gigabit. La serie de productos utiliza el chip industrial Broadcom, hasta 24 Gbps Capacidad de intercambio, caché de 4 Mbit, admite transmisión de video de alta definición 4K. Además, los 4 puertos PoE admiten el estándar IEEE802.3af / at. La potencia de salida PoE del puerto especial es de hasta 60 W y la potencia de salida total es de hasta 150 W. Cuenta con un anillo rápido, protección industrial de clase 4 (ESD, CS, RS, EFT), protección contra sobretensiones de 6KV y características L2, como VLAN, QoS, STP, etc. Satisface completamente las necesidades de aplicaciones industriales y proyectos de Ethernet.

1.2 Características de producto

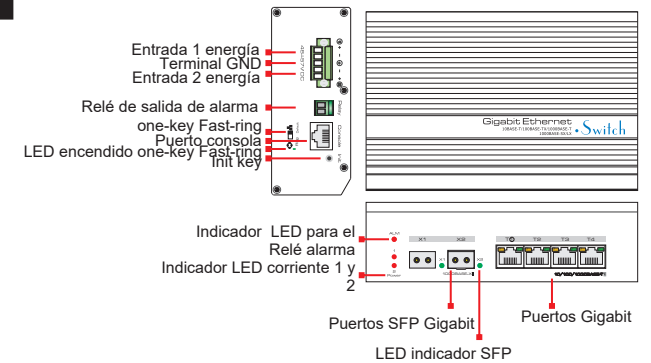
- Chip Broadcom; El búfer alcanza los 4 Mbit, admite transmisión de video de alta definición 4K;
- Función PoE: totalmente compatible con IEEE802.3 af / at estándar, P1 hasta 60W Máximo, puertos P2 ~ P4 30 W máximo.
- Admite gestión de red basada en web para las funciones de red, VLAN, QoS, Fast-Ring, RSTP, SNMP, etc.;
- Inmunidad a sobretensiones de 6KV, protección industrial clase 4 y capacidad anti interferencia;
- Fuente de energía redundante;
- Alarma de relevador: soporte sin entrada de energía, enlace Ethernet desactivado, alarma de enlace PoE desactivado por relevador;
- Admite temperaturas de rango amplio de -40°C ~ + 75°C.

1.3 Diagrama

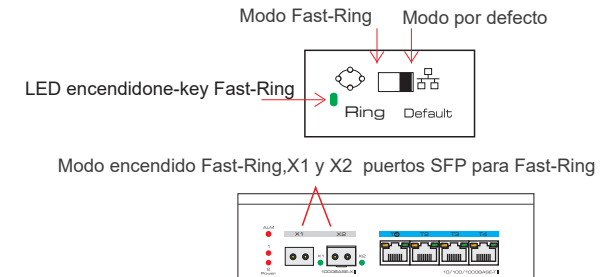
Switch PoE



Switch No-PoE



Configuración One-key Fast-Ring



1.4 + V IOLOIGIOUT

	Artículo	Switch PoE	Switch No PoE
Corriente	Alimentación	Adaptador de corriente	
	Ranfo de voltaje	48~57VDC	12~57VDC
	Consumo	Auto consumo <30W Salida PoE completa <150W	Auto consumo <30W
Puertos	Puertos de cobre	T1~T4 RJ45: 10/100/1000Base-T X1~X2 SFP : 1000Base-X	
	Distancia	Puertos RJ45: 0~100m; Puertos SFP, depende del modulo	
	Estándar PoE	IEEE802. 3 af/at,End-span;HPoE 60W solo soporta MAXIM chipset	NA
	Salida PoE	T1 ≤60W T2~T4 ≤30W	NA
	Consola	1*RJ45-R232 puerto serial (115200,8,N,1)	
	Init-key	presión corta: reinicio >5s valores de fabrica	
	One-key fast-ring	Defecto: Sin anillo (se puede configurar en la administración web) ; Modo anillo: Fast ring con SFP X1 y X2	
Red	Estándar	IEEE 802. 3, IEEE 802. 3u, IEEE 802. 3ab, IEEE802. 3z	
	Rendimiento	17.9Mpps	
	Switching	24Gbps	
	Buffer	4Mb	
	Tabla MAC	8K	
Alarma	Relé alarma	Power no-input,Ethernet link off,PoE link off alarm by relay turn over	
Administración	Administración	Layer 2 + PoE Web management	
Indicador	Corriente	2*red LED	
	RJ45	Link/Acting:Green LED PoE:Yellow LED	
	SFP	Link:Green LED	
Protección	protección	6KV:Per: IEC61000-4-5	
	EMC/EMI	ESD: 4 level Per: IEC61000-4-2 RS:4 level Per: IEC61000-4-3 EFT:4 level Per: IEC61000-4-4 CS:3 level Per: IEC61000-4-6	
Ambientales	Temp. operación	-40℃ ~+75℃	
	Temp. almacenamiento	-40℃ ~+85℃	
	Humedad	0~95%	
Mecánicas	Dimensiones (L*W*H)	157 mm×110 mm×46.5mm	
	Material	Aleación de aluminio	
	Color	Negro	
	Peso	1000g	

2 Installation



Caution

Anti-counterfeiting label is attached to switch's cover. Product damage caused by unauthorized disassembly is not covered under warranty.

2.1 Shipping List

Please check the following items before installation, if any missing, please contact your local dealer.

Item	Name	Quantity	Unit
1	Device	1	pc
2	Power adapter(In addition to buy)	1	pc
3	Accessory	1	pc
4	User manual	1	pc

2.2 Installation Precautions

To avoid device damage or personal injury by improper use, please observe the following precautions.

2.2.1 Safety Precautions



Instruction

This is level A product, which may cause radio disturbance in living environment. Users may need to take corresponding and effective measures to solve the problem.

- Pull out the power plug before cleaning the switch. Do not use wet cloth nor liquid to wipe or wash the switch;
- Do not leave the switch close to water or wet place so as to prevent water or dampness from entering into the switch;
- Make sure the switch work in a clean environment. Excessive dust may cause electrostatic adsorption, which will affect the equipment life and cause communication failure;
- The switch will work normally under the correct voltage. Please ensure the voltage indicated on the switch corresponds to the power voltage;
- To avoid the danger of electric shock, please do not open the switch case.
- Do not open the switch case even if the switch is powered off;
- The accessories (including but not limited to power cables, etc.), which can be used for the switch only, is prohibited for other applications.

2.2.2 Installation Requirements

The device should work in indoor environment to avoid thunder stroke. It is important to obey the following requirements no matter you install it in the cabinet or on the workbench directly:

- Enough space (larger than 10cm) for air outlet so as to facilitate the heating dissipation; Good ventilation system for cabinets and workbench is preferred;
- Ensure the Cabinet and workbench is sturdy enough to support the switch and it's accessories's weight;
- Cabinet and workbench with good grounding is preferred.

2.2.3 The Requirements of Electromagnetic Environment

When it is working, the switch may be affected by external interference outside the system through the ways of radiation and conduction. Please pay attention to the followings:

- AC power supply is TN system, so it is necessary to use single phase power socket (PE) which can protect ground wire so that the filter circuit can effectively filter out the power grid disturbances;
- The switch should work far away from high-power radio transmitters, radar transmitters, high-frequency devices;
- Use electromagnetic shielding if necessary, such as shielded cable;
- Interface cables should be arranged indoor rather than outdoor to prevent over-voltage or over-current damage to the signal port.

2.3 Installation Way

There are 3 installation ways: rack, workbench and wall-hung installation.

Caution

Please pull out the power plug before installing or moving the switch. Grounding and anti-lightening can greatly increase the protection level of the switch. please connect the grounding terminal to the earth area by using at least wire 20.

Instruction

The diagram is for reference only, the products are subject to actual product.

2.3.1 Din-rail Installation

Installation process:

- (1) Install the Din-rail hanger to the switch;
- (2) Install the switch to the Din-rail ;

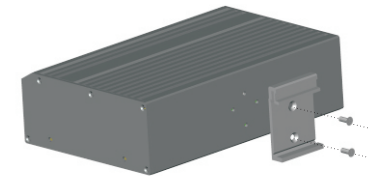


Figure 2-1 Install Din-rail hangers diagram

2.3.2 Wall hung Installation

You can install the switch to the clean and stable wall.

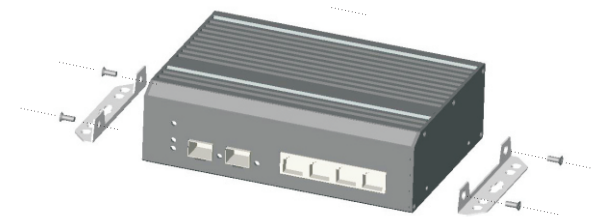


Figure 2-2 Install hangers diagram