



Package content



UniFi Switch



Rack mount brackets
(qty: 2)



Screw Clamps (8)



Clamping screws (4)



Cage Nuts (Qty: 4)



Power cord

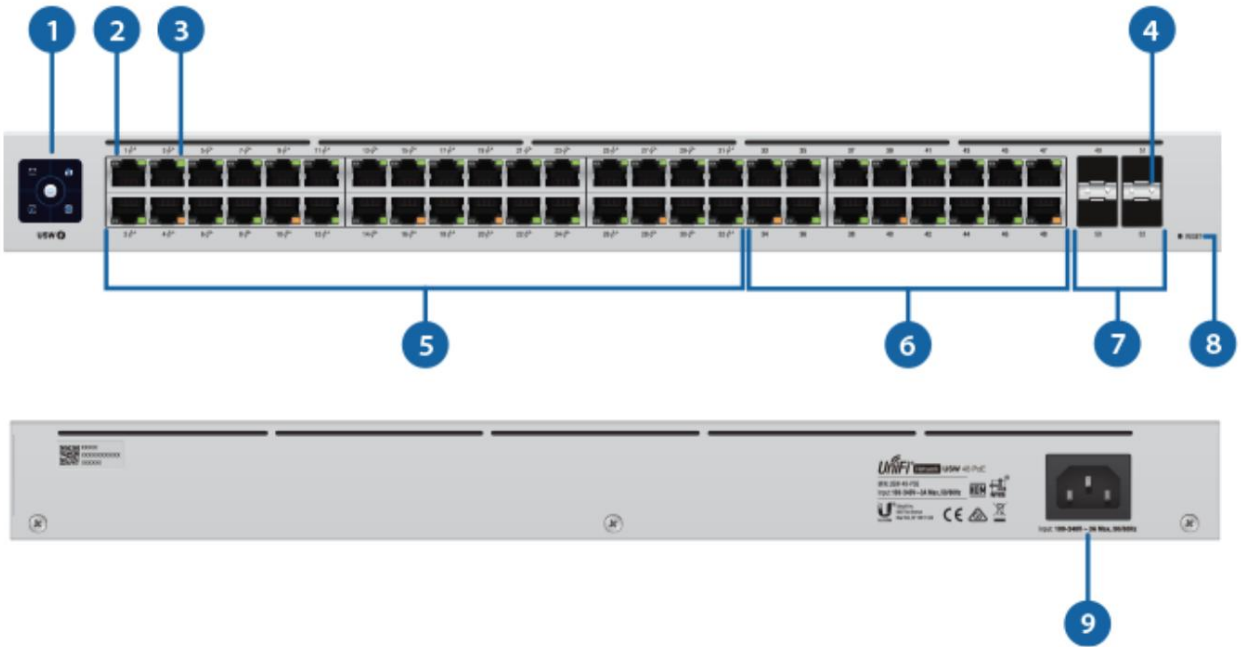
System Requirements

- Linux, Mac OS X or Microsoft Windows
- 7/8/10 Java Runtime Environment 1.6 (1.8 or later is recommended)
- Web browser: Google Chrome (other browsers may have limited functionality).
- UniFi Controller Software v5.12.x or later, available at: ui.com/download/unifi



IMPORTANT: We strongly recommend using power regulation and supporting an uninterruptible power supply to prevent equipment damage due to local AC power stability issues.

Device Overview



1 Touch screen	
startup animation	Starting.
fixed white light	Factory defaults, pending approval.
steady blue light	Network approval successful and correct operation.
location animation	This indicates you have clicked Locate in the UniFi controller software. The software will also show the location of the device on the map.
2 RJ45 PoE LEDs (ports 1 - 32)	
disabled	Sin PoE
Amber	PoE 802.3af/at
3 RJ45 Speed/Link/Activity LED (Ports 1 - 48)	
disabled	not connected
Amber	Link established at 10/100 Mbps Blinking indicates activity



USW-48-POE Quick Start Guide

	Blinking indicates activity
4 SFP Speed/Link/Activity LED (Ports 49 - 52)	
disabled	not connected
Green	Link established at 1 Gbps Blinking indicates activity
5 RJ45 (ports 1 - 32)	
RJ45 ports support 10/100/1000 Ethernet connections and an 802.3af/at PoE output.	
6 RJ45 (ports 33 - 48)	
RJ45 ports support 10/100/1000 Ethernet connections.	
7 SFP (ports 49 - 52)	
The SFP ports are hot-swappable and support 1 Gbps connections.	
8 Reset button	
This button has two functions on the UniFi Switch: <ul style="list-style-type: none">• Reset – Quickly press and release the Reset button.• Restore Factory Default Settings: Press and hold the Reset button for more than five seconds.	
9 power port	
Connect the included power cord to the power port.	

installation requirements

- Phillips screwdriver
- Standard size, 19" wide rack with a minimum 1U height
- For indoor applications, use Category 5 (or higher) UTP cabling certified for indoor use.
- For outdoor applications, Category 5 (or higher) shielded cabling must be used for all Ethernet connections and must be connected to the AC ground of the power supply.



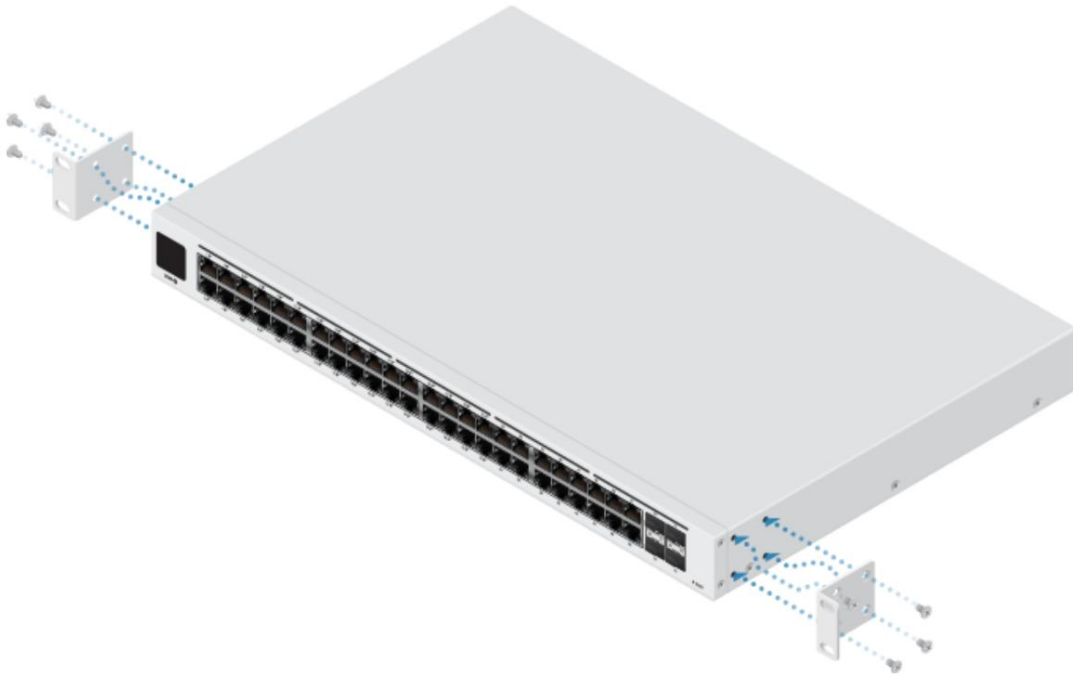
electrostatic discharge phenomena with suitable lightning surge protectors. Ethernet cable. For more details, visit: ui.com/toughcable



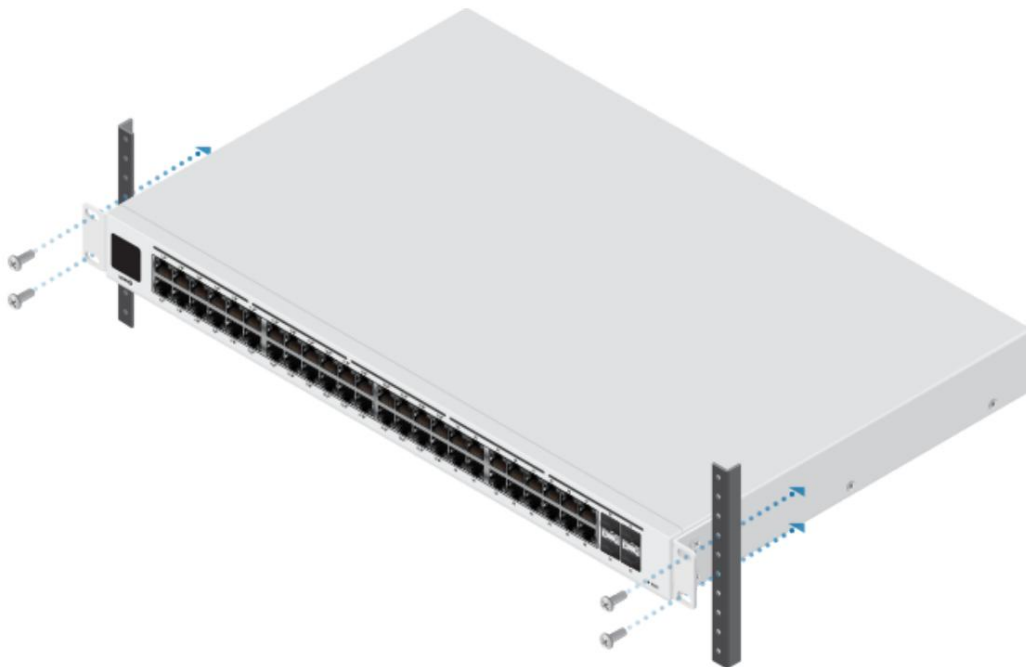
Note: Although the wiring can be run outside, the UniFi Switch must be stored inside a protective case.

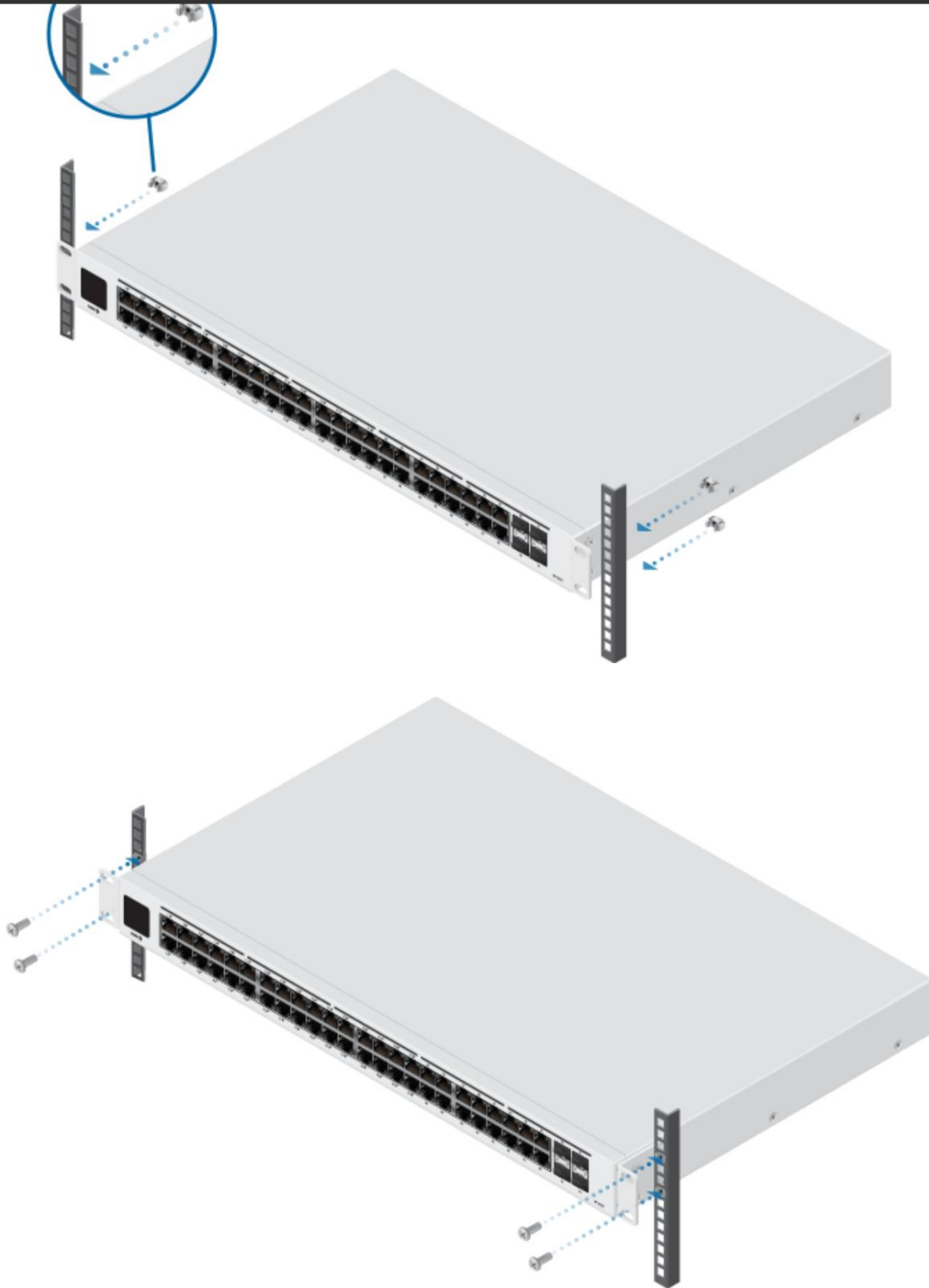
Device installation

1.



2.



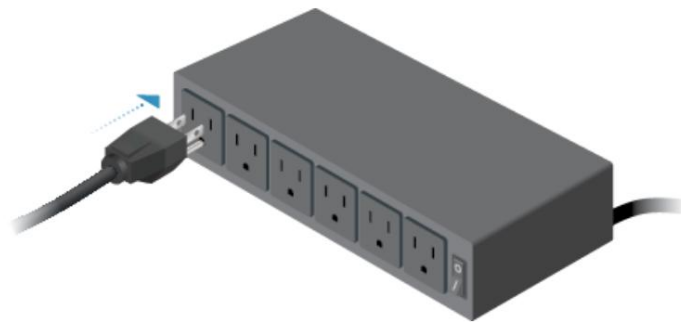


Power connection

1.



2.



ethernet connection



Note: If you are connecting PoE devices, look at the display to determine the available PoE wattage.

SFP connection

1.





3.



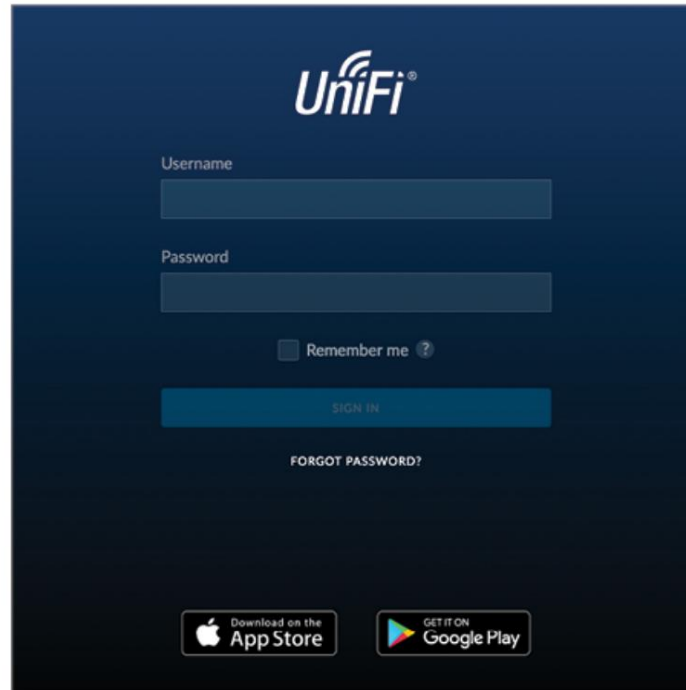
For more information on compatible fiber SFP modules, visit: ubnt.link/UniFi_SFP_DAC_Compatibility

Software installation

Download and install the latest version of the UniFi driver software at ui.com/download/unifi and follow the instructions on the screen.



Once you have installed the software and run the UniFi Setup Wizard, a login screen for the UniFi Controller management interface will appear. Enter the administrator name and password you created and click Sign In.



You can manage your wireless network and view network statistics through the UniFi Controller's management interface.

To deploy the UniFi Switch, go to ["UniFi Switch Deployment"](#).

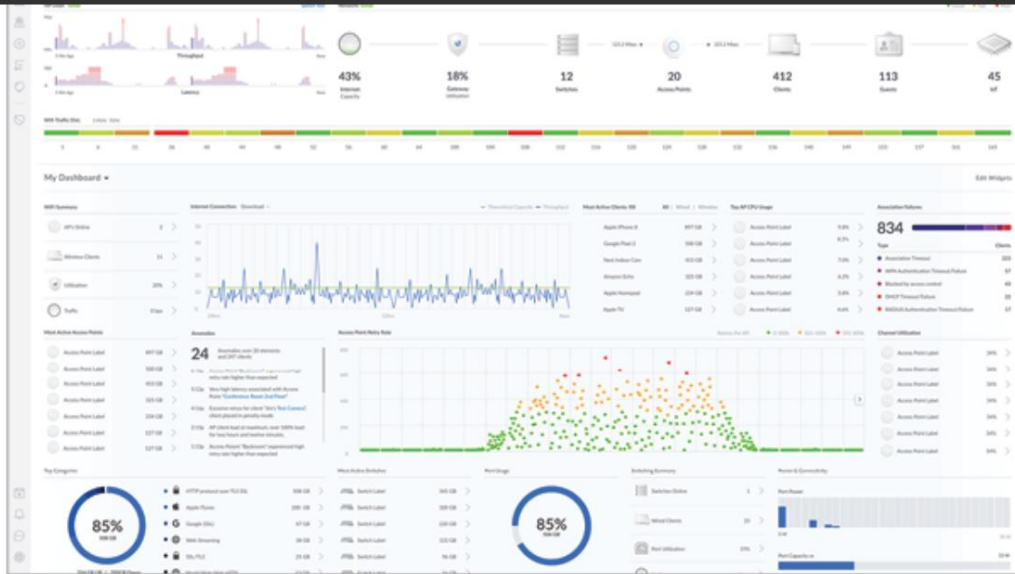
For information on setting up and using the UniFi Controller software, see the user guide located on our website: ui.com/download/unifi

Implementation of the UniFi switch

1. From the UniFi controller panel, click Devices on the left menu bar.



USW-48-POE Quick Start Guide



2. On the Devices screen, locate the UniFi Switch in the list of devices in the Model column. To approve the UniFi Switch, click Adopt.

The screenshot shows the 'Devices' screen in the UniFi Network Controller. The table lists the following devices:

DEVICE NAME	IP ADDRESS	STATUS	MODEL	VERSION	UPTIME
USG	10.2.50.21	CONNECTED	UniFi Security Gateway 4P	4.4.18.5052172	79d 17h 52m 34s
US-4XS	192.168.1.155	CONNECTED (1000 FDX)	UniFi Switch XG 4POE	4.0.5.9550	55m 40s
US-XG	192.168.1.135	CONNECTED (1000 FDX)	UniFi Switch 54XG	4.0.1.9421	11d 3h 57m 49s
US16P-150W	192.168.1.176	CONNECTED	UniFi Switch 16 POE-150W	4.0.5.9550	54m 32s
US8P-150W	192.168.1.131	CONNECTED	UniFi Switch 8 POE-150W	4.0.1.9421	25d 22h 14m 38s
US8P-150W	192.168.1.248	CONNECTED	UniFi Switch 8 POE-150W	4.0.5.9550	56m 14s
US8P-60W	192.168.1.145	CONNECTED	UniFi Switch 8 POE-60W	4.0.5.9550	12m 47s
Acacia77049F	192.168.1.152	PENDING ADOPTION	UniFi Switch 48 POE	4.0.5.9550	1h 27m 16s

3. The screen will turn blue to confirm successful deployment.

specs

USW-48-POE	
Dimensions	442,4 x 285 x 43,7 mm (17,42 x 11,22 x 1,72")
Weight	4,52 kg (9,97 lb)



USW-48-POE Quick Start Guide

Interfaces	
Red	48 10/100/1000 RJ45 ports 4 1G SFP Ethernet ports
Management	Ethernet and bandwidth
feeding method	100-240 V AC, 50/60 Hz, universal input
Power supply	CA/CC, interno, 240 W
Supported voltage range	From 100 to 240 V AC
Maximum power consumption (does not include PoE output)	45W
Luces LED	
RJ45 data port	PoE; speed/link/activity
SFP data port	Link/Activity
ESD/EMP protection	Air: ± 16 kV, contact: ± 12 kV
Shocks and vibrations	ETSI300-019-1/4 standard
Operating temperature	-5 to 40° C (23° F to 104° F)
operating humidity	10 to 90% non-condensing
Certifications	CE, FCC, IC

PoE	
Interfaces the PoE	
Ports 1-32	POE+ IEEE 802.3af/at (Tomas: 1, 2+; 3, 6-)
Maximum PoE Wattage per port per PSE	
802.3at	32W
802.3af voltage range mode	44-57 V
802.3at voltage range mode	50-57 V

safety instructions

1. Read, follow and save these instructions.
2. Pay attention to all warnings.
3. Only use the devices or accessories indicated by the manufacturer.



WARNING: Lack of adequate ventilation may result in a fire hazard.
Keep at least 20mm clearance next to the ventilation holes for proper ventilation.

